



**WATCHME.TORNOS.CH**

– ENGLISH –

# SwissNano

**WATCH ME!**



SMALL IS BEAUTIFUL



SwissNano releases unique emotions with its innovative design. It adds a layer with the ability to customize the machine in eight different colors.

#### SPECIAL EDITIONS



*"Watchmaking"*



*"Swiss"*



SWISSNANO





*green acid*



*red passion*



*pink diva*



*orange pumpkin*



*black graphite*



*purple grapes*

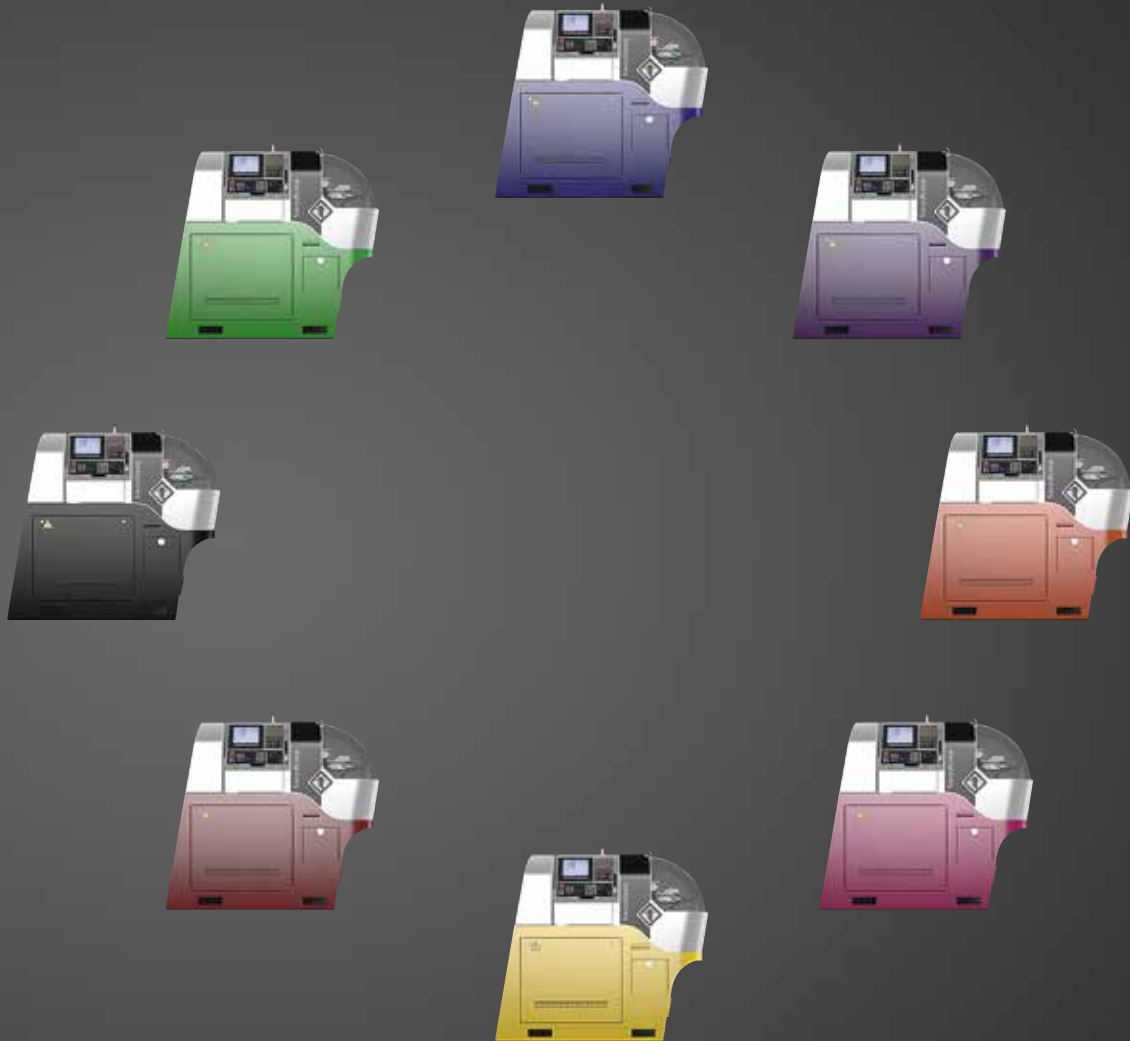


*blue ocean*



*yellow summer*

# COLORS



Watchmaking  
Compact  
Design  
Symmetrical structure  
4 mm  
Ergonomics  
Compact  
Design  
Compact  
Gear hobbing  
High precision  
6 linear axes  
Front access  
Machining with or without guide bush  
Ergonomics  
Watchmaking  
High precision  
Symmetrical structure  
Front access  
Ergonomics  
Compact  
High precision  
4 mm  
Machining with or without guide bush  
6 linear axes  
Gear hobbing  
High precision  
Watchmaking  
Machining with or without guide bush









HIGH PRECISION





HIGH PRECISION



Material:	20 AP
External diameter:	Ø 0.372 mm
Part length:	1.3 mm



Material: 20 AP  
External diameter:  $\varnothing$  1.0 mm  
Part length: 1.787 mm

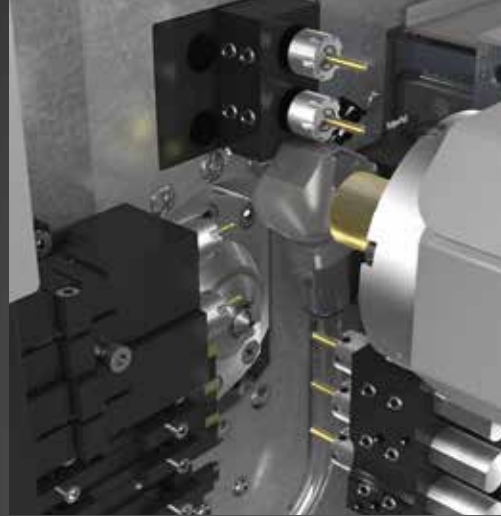
HIGH PRECISION



Material:	20 AP
External diameter:	Ø 2.48 mm
Part length:	3.69 mm



*Turning*



*Drilling*



*Synchronous rotating bushing*



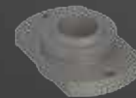
*Cross rotating spindle*



*Gear hobbing attachment*



*Thread milling / Polygon  
milling attachment*



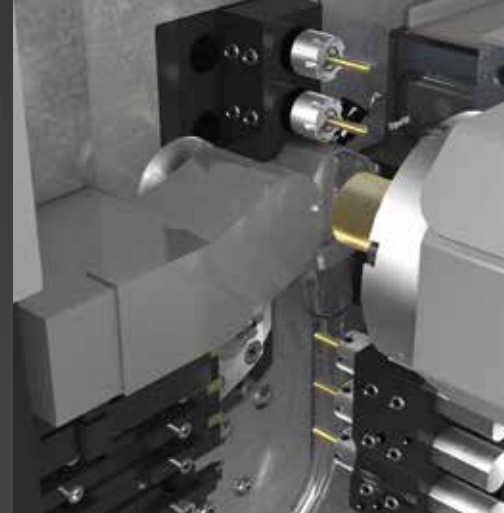
*Kit to work without a bushing*



# SWISSNANO EQUIPMENT



*Gear hobbing*



*Polygon milling*

SwissNano easily adapts to the user's needs and in option can also be fitted with the following equipment:

- HF spindles
- Carousel collection system
- Vacuum
- Fire extinguishing device
- Oil mist extractor

# UNIQUE MACHINING OPERATIONS

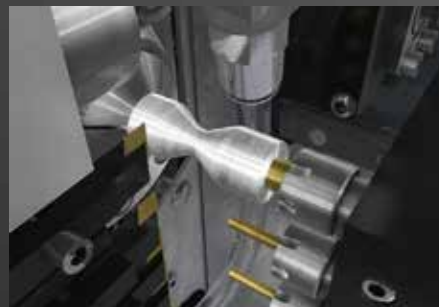
The SwissNano kinematic has been specifically studied to produce small parts of highest precision. The symmetrical cast iron base gives the machine an outstanding rigidity which allows to obtain excellent surface finishes.



*Gear hobbing and deburring*



*Rough finishing*



*Turning and drilling*

SwissNano

X1

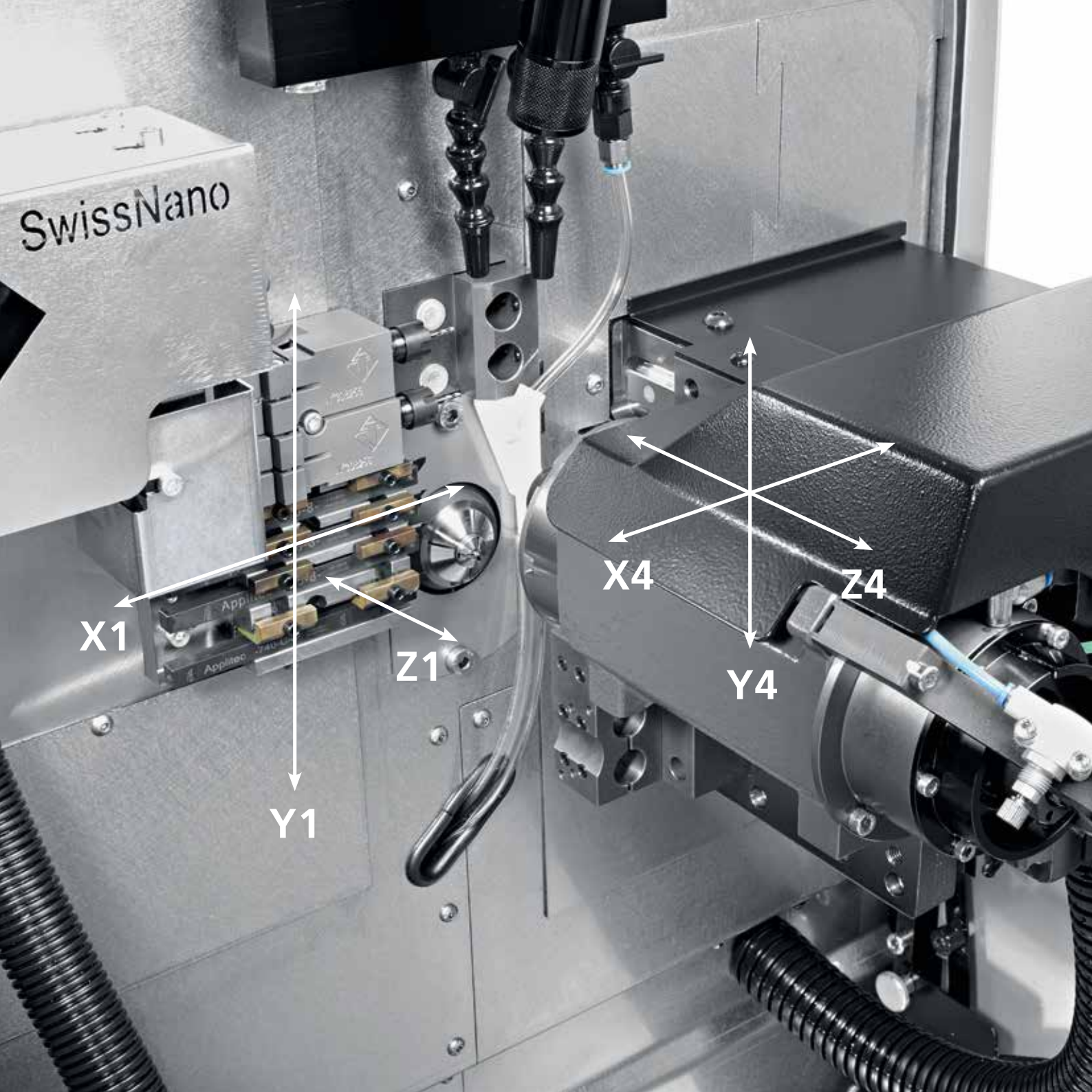
Y1

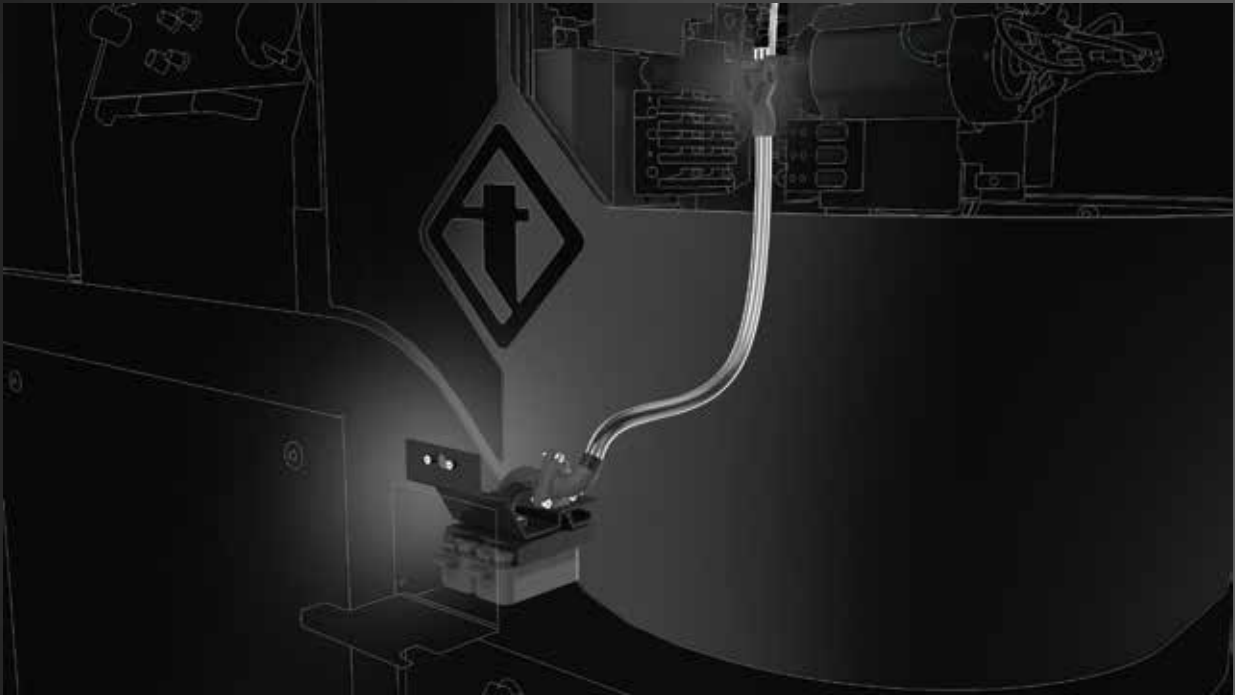
Z1

X4

Y4

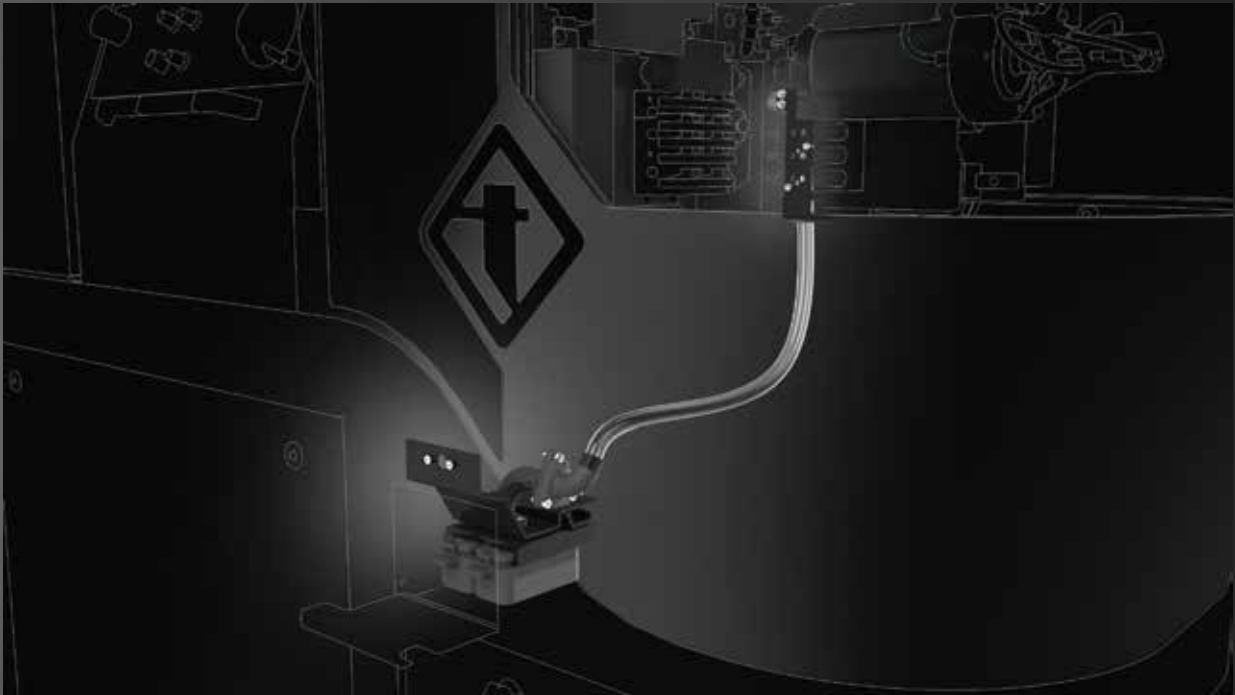
Z4



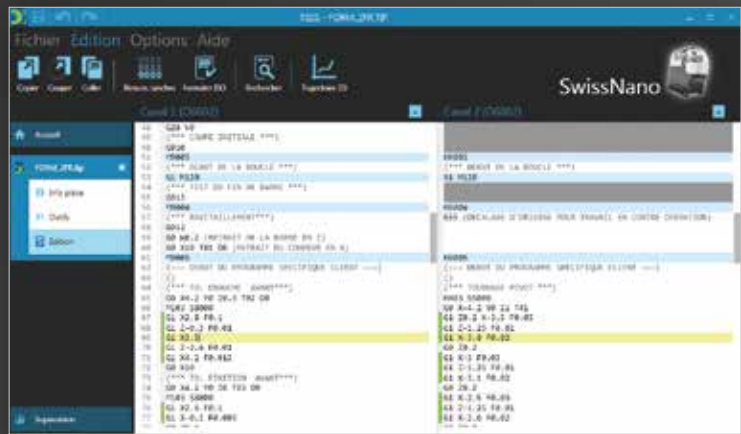
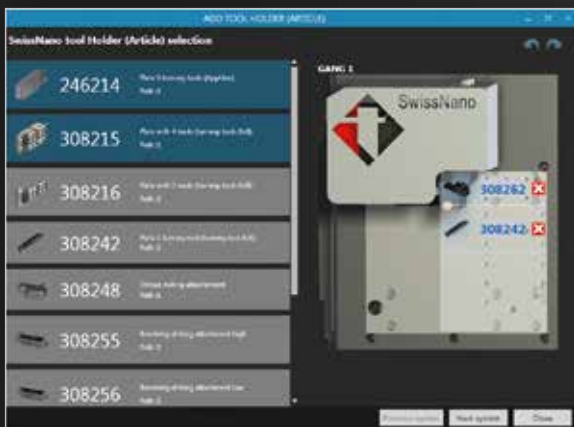


Part pick up by vacuum in counter operations.

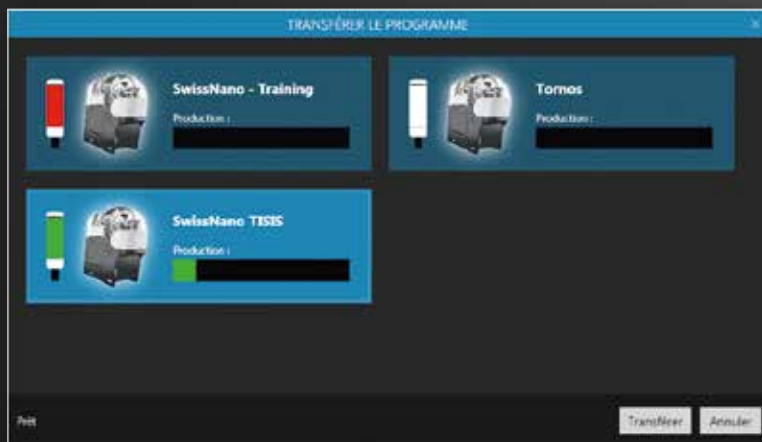
## PART PICK UP – VACUUM



Part pick up by vacuum in main operations.

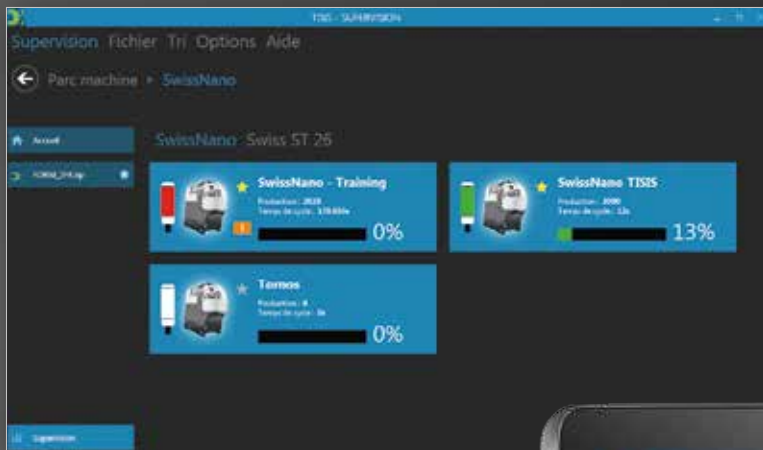


Program your SwissNano machine



Transfer\* your part programs  
through your network

# TISIS: PROGRAM AND COMMUNICATE WITH YOUR SWISSNANO MACHINE



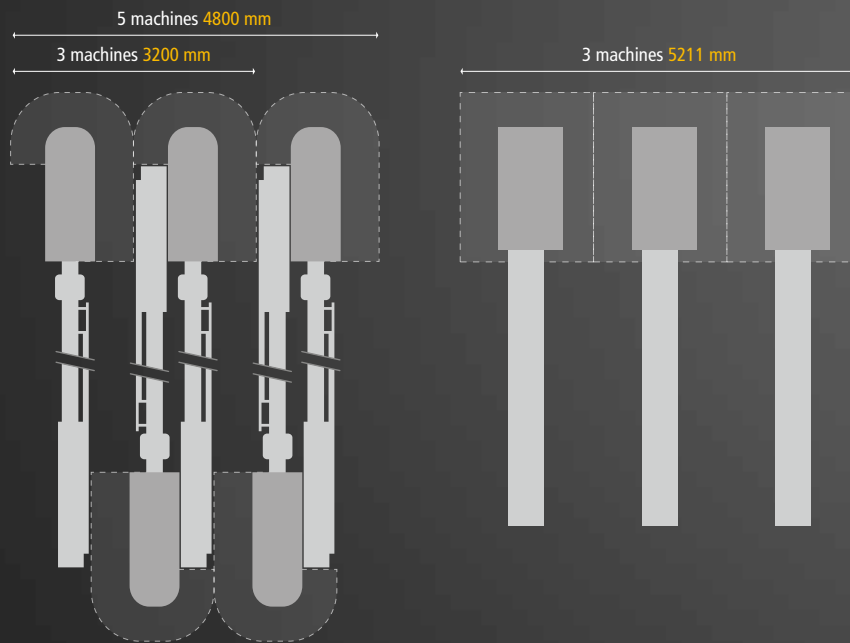
Place your tools in an interactive manner

Monitoring\*



\* Requires the connectivity pack

Thanks to its intelligent design and reduced size, SwissNano fits the space of a Tornos M7 cam machine in your workshop. What is more, you only need a width of 3.2 meters for 3 SwissNanos, whilst the equivalent competing numerical control machines take up more than 5 meters. This will help you increase your productivity and reduce costs.

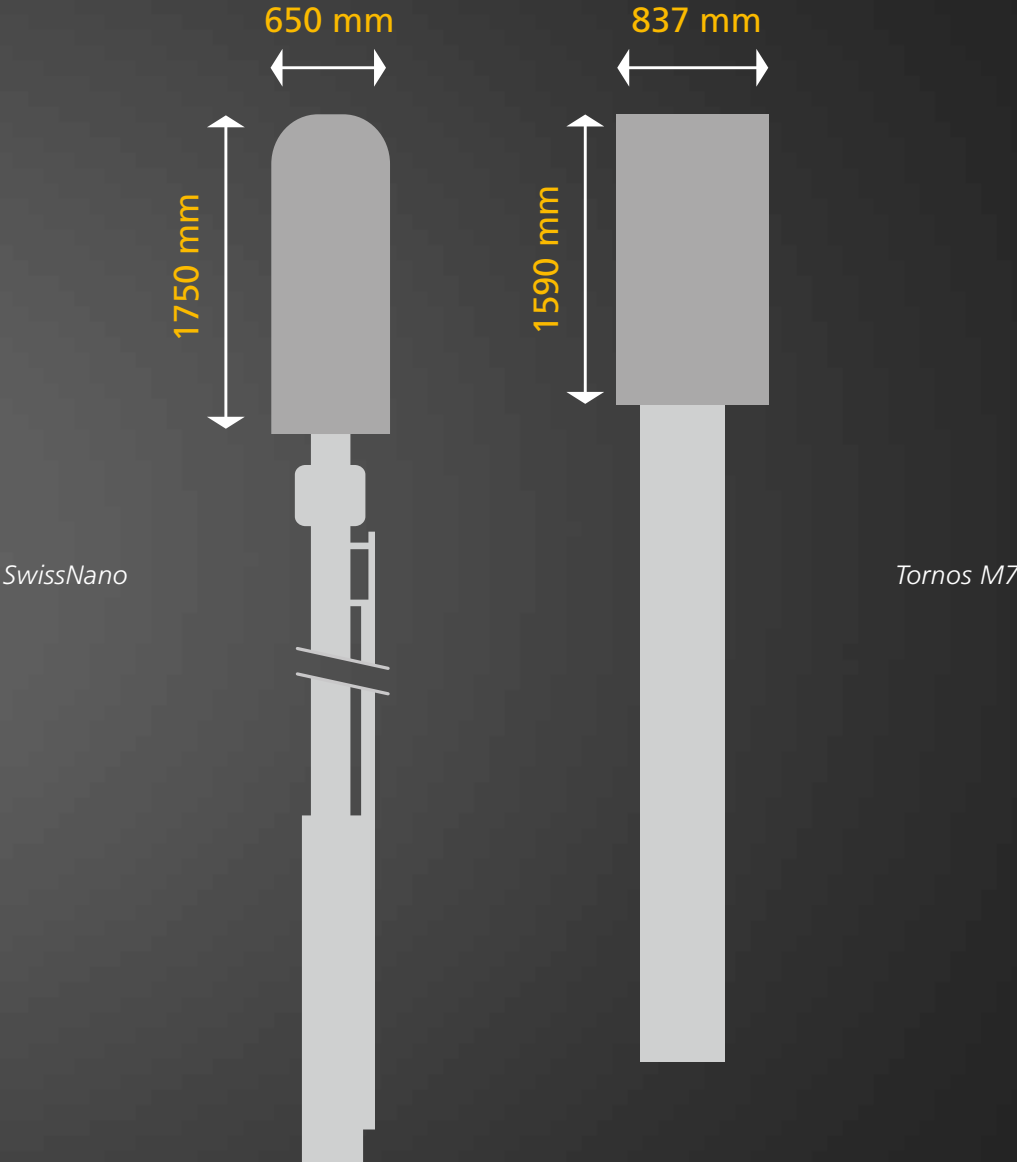


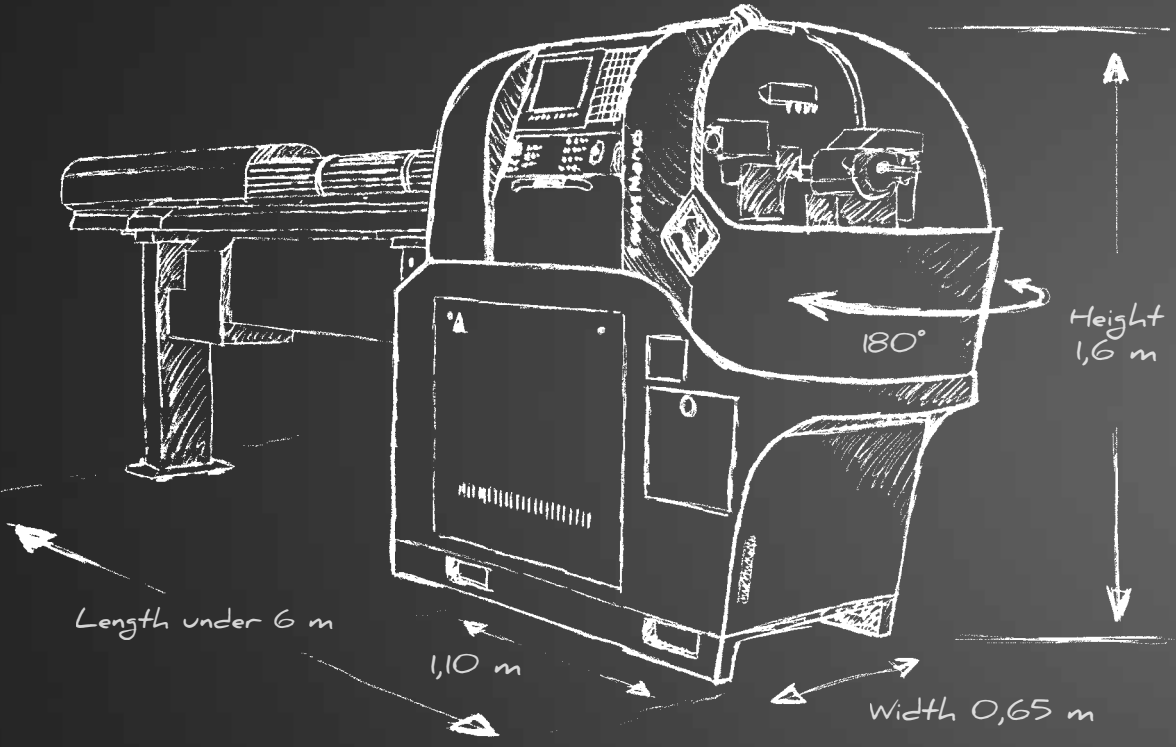
*SwissNano*

*Concurrency*



# SWISSNANO: COMPACT AND ERGONOMIC





# TECHNICAL SPECIFICATIONS

## MAIN SPINDLE (Z1 / S1 / C1)

SwissNano 4/6

Max. bar capacity	mm	4
Standard workpiece length with fixed guide bush	mm	28
Spindle rotation speed	t/min	0-16000
Spindle power (nominal/max)	kW	1/2
Torque (nominal/max)	Nm	0.65/2

## GUIDE BUSH HOLDER (X1 / Y1 / S11)

Number of tool positions on guide bush		7
Turning tool section		8x8
Positions for radial rotating tools (option)		2
Rotating tool speed of rotation	t/min	8000
Rotating tool power	kW	0.5

## END ATTACHMENT AND COUNTER SPINDLE (X4 / Y4 / Z4 / S4)

Number of tool positions		3x Ø 16
Positions for rotating tools		3
Max. bar capacity	mm	4
Insertion length of workpiece into counter spindle	mm	26
Spindle rotation speed	t/min	0-16000
Spindle power (nominal/max)	kW	1/2
Torque (nominal/max)	Nm	0.65/2
Counter spindle ejector stroke	mm	10

## BASIC MACHINE EQUIPMENT

Fixed guide bush + oil filter	✓
Front platten rotating tool motor	✓
C1 axis	✓
Polygon operation (and gear hobbing) function programming	✓
Thread milling device	option
Gear hobbing device	option
Radial drills	option
Adjustment of S4 counter spindle end of clamping	✓
Pneumatic ejection of workpiece + air/oil cleaning of collet	✓
Automatic centralized lubrication cycle	✓
Beacon (1 color)	✓
Fire extinguisher interface	✓

# TECHNICAL SPECIFICATIONS

## SECONDARY OPERATION

Number of tool positions	2x Ø 16
Total number of basic machine tools	12
Operation/secondary operation tool distribution	10/2

## GENERAL SPECIFICATIONS

Max. length	mm	1800
Length with LNS Tryton 3m	mm	5900
Max. width	mm	650
Height (without signalling lamp)	mm	1575
Spindle height	mm	1150
Weight	kg	700
Cutting oil tray capacity	l	45
Coolant pump power	kW	0.18
Colors: RAL 9006 grey, RAL 9011 graphite black		
CE/CEM certified		



SwissNano





**WATCH**ME.TORNOS.CH



**TORNOS S.A.**

Rue Industrielle 111

CH-2740 Moutier

Tel. +41 (0)32 494 44 44

Fax +41 (0)32 494 49 03

[contact@tornos.com](mailto:contact@tornos.com)

[www.tornos.com](http://www.tornos.com)

**Conforms to the European CE/CEM Safety Standards**

This document is based on information available at the time of publication. While every effort has been made to be accurate, the information contained herein does not purport to cover all details or variations in hardware and software, nor to provide for every possible contingency in connection with installation, operation and maintenance. TORNOS S.A. assumes no obligation of notice to holders of this document with respect to changes subsequently made. TORNOS S.A. makes no representation or warranty, expressed, implied, or statutory with respect to, and assumes no responsibility for the accuracy, completeness, sufficiency or usefulness of the information contained herein. No warranties of merchantability nor fitness for purpose shall apply.